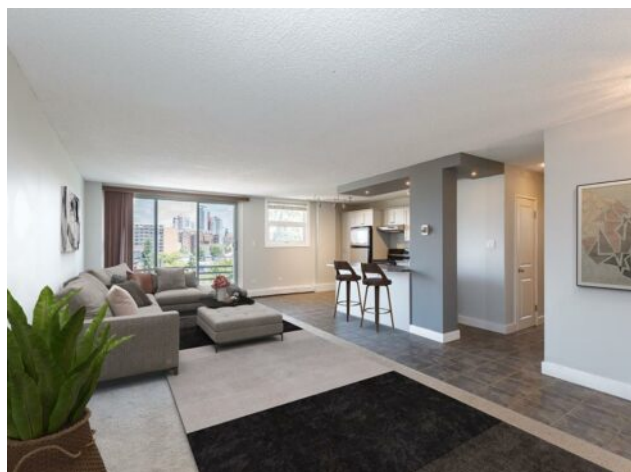


**610, 1027 Cameron Avenue SW
Calgary, Alberta**

MLS # A2233098



\$299,900

Division:	Lower Mount Royal		
Type:	Residential/High Rise (5+ stories)		
Style:	Apartment-Single Level Unit		
Size:	875 sq.ft.	Age:	1962 (63 yrs old)
Beds:	2	Baths:	1
Garage:	Covered, Off Street, Stall		
Lot Size:	-		
Lot Feat:	-		

Heating:	Baseboard, Natural Gas	Water:	-
Floors:	Carpet, Ceramic Tile	Sewer:	-
Roof:	-	Condo Fee:	\$ 628
Basement:	-	LLD:	-
Exterior:	Brick, Concrete	Zoning:	M-C2
Foundation:	-	Utilities:	-
Features:	Breakfast Bar, No Animal Home, No Smoking Home, Soaking Tub, Storage, Track Lighting		

Inclusions: N/A

Beautiful | Refreshed | Repainted, including all cabinetry with a modern updated palette! Churchill Towers, a prime Lower Mount Royal TOP FLOOR corner unit with outstanding City views. Steps away from 17th Ave, where some of Calgary's best restaurants, bars, salons, and boutiques can be found. Want convenience, energy, and walkability? This is where it happens. Inside you'll find 2 bedrooms, 1 full bath, and an open layout that flows nicely. Quiet. Private. Spacious. Designer wallpaper + paint feature walls in primary bedroom. The kitchen delivers stainless steel appliances, wood cabinetry, and plenty of prep space. In-suite stacked washer/dryer, plus optional access to the building's shared laundry whenever you need it. Covered parking, separate storage, bike room, and security cameras throughout the building. Condo fees that include: heat, water, sewer, snow removal, common area maintenance, parking, insurance, reserve fund, and professional management. This penthouse unit is for someone who values location, lifestyle, and the edge that comes from being where the action is. Come take a peak!