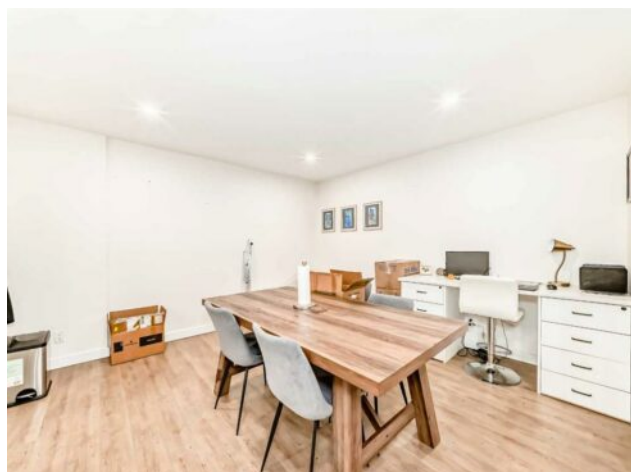


11, 635 Marsh Road NE  
Calgary, Alberta

MLS # A2240808



# \$334,000

Division:	Bridgeland/Riverside		
Type:	Residential/Low Rise (2-4 stories)		
Style:	Apartment-Single Level Unit		
Size:	1,212 sq.ft.	Age:	1981 (44 yrs old)
Beds:	2	Baths:	2
Garage:	Parkade		
Lot Size:	-		
Lot Feat:	-		

Heating:	Baseboard	Water:	-
Floors:	Carpet, Laminate, Tile	Sewer:	-
Roof:	-	Condo Fee:	\$ 855
Basement:	-	LLD:	-
Exterior:	Concrete, Stucco	Zoning:	RM-5
Foundation:	-	Utilities:	-
Features:	Quartz Counters		

Inclusions: N/A

Back on the Market with a fresh new price!! Amazing opportunity to own a 1200 SQ FT two bed, two bath condo in the highly sought after community of Bridge land. This condo has been completely renovated. Renovations include; adding a 3-piece ensuite onto the main bedroom, quartz counter tops, pot lights, kitchen Cabinets, flooring, and much much more. The unit offers a heated underground parking spot, north facing balcony, and storage units. This opportunity wont last long, book a showing today!