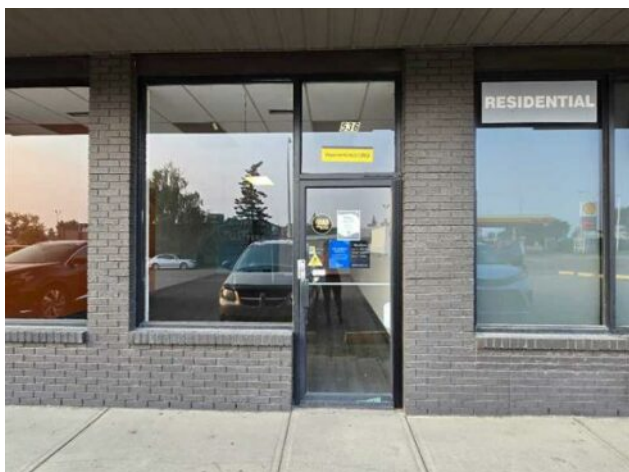


**536 2 Avenue SE  
Airdrie, Alberta****MLS # A2255430****\$4,320 per month****Division:** Edmonton Trail**Type:** Retail**Bus. Type:** -**Sale/Lease:** For Lease**Bldg. Name:** -**Bus. Name:** -**Size:** 1,280 sq.ft.**Zoning:** -**Heating:** -**Addl. Cost:** -**Floors:** -**Based on Year:** -**Roof:** -**Utilities:** -**Exterior:** -**Parking:** -**Water:** -**Lot Size:** -**Sewer:** -**Lot Feat:** -**Inclusions:** n/a

FOR RENT 1280 SQFT! GREAT LOCATION FOR YOUR BUSINESS: SMALL CAFE, loan shop, take-out and most retailers are welcome here. Right off of Edmonton Trail and 2 Ave SE. Near many shops, offices, next to a hotel, and across from a gas station and antique mall. The Genesis Centre and other major retailers are just minutes away by foot and car. 1280 sqft of usable space. A larger bay that is 1911 sqft will be available as well in the near future. Possibility to combine the 2 units if in need of a larger bay.