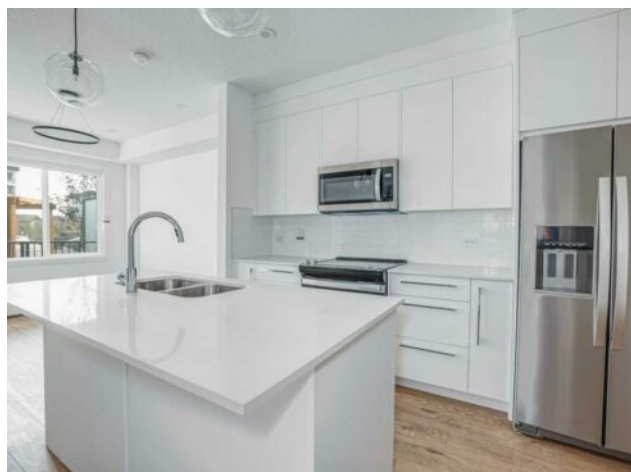


2101, 111 Wolf Creek Drive SE
Calgary, Alberta

MLS # A2256804



\$284,800

Division:	Wolf Willow		
Type:	Residential/Low Rise (2-4 stories)		
Style:	Apartment-Single Level Unit		
Size:	622 sq.ft.	Age:	2024 (1 yrs old)
Beds:	2	Baths:	1
Garage:	Underground		
Lot Size:	-		
Lot Feat:	-		

Heating:	Baseboard	Water:	-
Floors:	Vinyl Plank	Sewer:	-
Roof:	-	Condo Fee:	\$ 261
Basement:	-	LLD:	-
Exterior:	Composite Siding	Zoning:	M-2
Foundation:	-	Utilities:	-
Features:	See Remarks		

Inclusions: N/A

| CORNER UNIT | 2 BEDS | 1 BATH | TITLED UNDERGROUND PARKING | GYM | PET SPA | PARTY ROOM | Welcome to this bright corner unit in the desirable community of Wolf Willow, steps away from the scenic Bow River. This open-concept layout features 2 bedrooms and 1 bathroom, blending comfort with modern style. The kitchen is complete with a large quartz island, stainless steel appliances, and sleek cabinetry, while the living room offers direct access to a private balcony, perfect for relaxing evenings. The primary bedroom includes a walk-in closet with direct access to the 4-piece bathroom, and a second bedroom adds even more flexibility. Additional highlights include in-suite laundry, heated titled underground parking, charging station, and access to a pet spa, bike storage, fitness room, and party room. Wolf Willow offers a lifestyle surrounded by walking and biking paths, off-leash parks, golf courses, and is only minutes from shopping, dining, and major roadways. Call your favourite agent for a showing today!