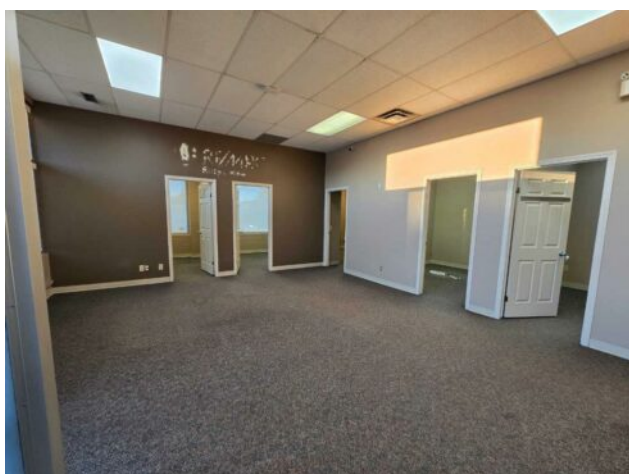


**540 2 Avenue SE
Airdrie, Alberta**

MLS # A2266532



\$6,449 per month

Division: Edmonton Trail

Type: Retail

Bus. Type: -

Sale/Lease: For Lease

Bldg. Name: -

Bus. Name: -

Size: 1,911 sq.ft.

Zoning: -

Heating: -

Addl. Cost: -

Floors: -

Based on Year: -

Roof: -

Utilities: -

Exterior: -

Parking: -

Water: -

Lot Size: -

Sewer: -

Lot Feat: -

Inclusions: n/a

FOR RENT 1911-sqft space! GREAT LOCATION FOR YOUR BUSINESS. Small cafe, loan shop, take out and most retailers are welcome here. Right off of Edmonton trail and 2 ave SE. Near many shops and offices. Next to a hotel. THIS 1911-sqft space amazing for a clinic/pharmacy combo. There are 8 rooms already in place and little renovation is needed to start. Across from a gas station, antique Mall, Genesis Centre and other major retailers that are just minutes away by foot and car. A Smaller bay that is 1280-sqft will be available as well in the near future. Possible to combine the 2 units if in need for a larger bay.