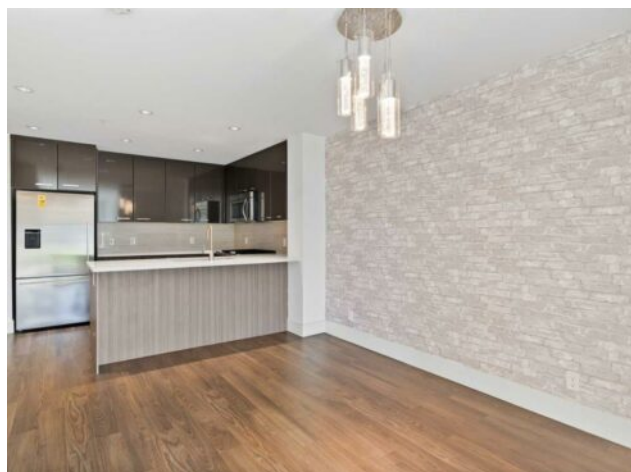


106, 510 Edmonton Trail NE  
Calgary, Alberta

MLS # A2186373



**\$289,500**

<b>Division:</b>	Bridgeland/Riverside		
<b>Type:</b>	Residential/Low Rise (2-4 stories)		
<b>Style:</b>	Apartment-Low-Rise (1-4)		
<b>Size:</b>	583 sq.ft.	<b>Age:</b>	2016 (9 yrs old)
<b>Beds:</b>	1	<b>Baths:</b>	1
<b>Garage:</b>	Underground		
<b>Lot Size:</b>	-		
<b>Lot Feat:</b>	-		

<b>Heating:</b>	Baseboard, Natural Gas	<b>Water:</b>	-
<b>Floors:</b>	Carpet, Laminate, Tile	<b>Sewer:</b>	-
<b>Roof:</b>	Flat Torch Membrane, Asphalt Shingle, Fiberglass	<b>Condo Fee:</b>	\$ 467
<b>Basement:</b>	-	<b>LLD:</b>	-
<b>Exterior:</b>	Cement Fiber Board, Mixed, Vinyl Siding, Wood Frame	<b>Zoning:</b>	M-C2
<b>Foundation:</b>	-	<b>Utilities:</b>	-
<b>Features:</b>	Quartz Counters		

**Inclusions:** None

Welcome to #106, 510 Edmonton Trail NE, a stylish newly painted one-bedroom, one-bathroom condo in the vibrant community of Bridgeland. This modern home features an open-concept layout with large windows that fill the space with natural light. The contemporary kitchen boasts quartz countertops, a spacious island, and stainless steel appliances, seamlessly flowing into the cozy living area. Step out onto your private patio, an ideal spot for relaxing or entertaining. The generously sized bedroom includes a walk-through closet that leads to a well-appointed bathroom, offering both comfort and functionality. Additional conveniences include in-suite laundry, heated underground parking, and a secure storage locker and a onsite gym. Located in one of Calgary's most sought-after neighborhoods, this condo is just steps away from trendy restaurants, cafes, and shops. With easy access to downtown, transit, and the Bow River pathways, it offers the perfect balance of urban living and community charm. Don't miss the opportunity to make this beautiful home your own—schedule a viewing today!