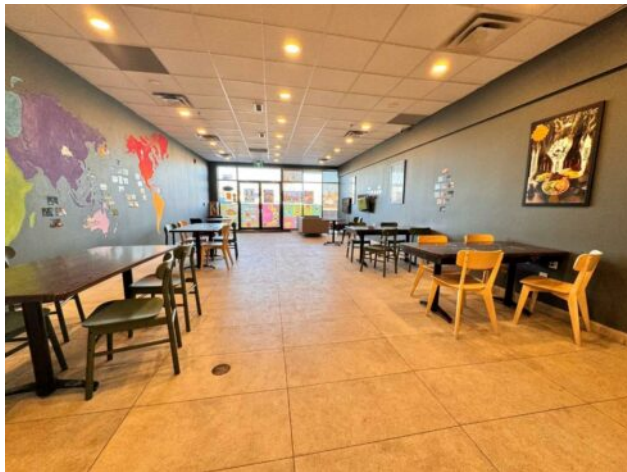


**240 Midpark Way SE
Calgary, Alberta****MLS # A2191902****\$199,900****Division:** Midnapore**Type:** Business**Bus. Type:** Fast Food, Food & Beverage**Sale/Lease:** For Lease**Bldg. Name:** -**Bus. Name:** -**Size:** 1,541 sq.ft.**Zoning:** -**Heating:** -**Addl. Cost:** -**Floors:** -**Based on Year:** -**Roof:** -**Utilities:** -**Exterior:** -**Parking:** -**Water:** -**Lot Size:** -**Sewer:** -**Lot Feat:** -**Inclusions:** N/A

An excellent opportunity to own a Taiwanese global franchise teahouse chain, recognized as the largest teahouse franchise in the world. This beautifully designed 1,541 sq. ft. store is located in a prime area near Macleod Trail SE, with ample customer parking and two reserved spots. The monthly rent is only \$5,830, which includes operating costs and utility fees. This turnkey business comes fully equipped, and the franchise provides comprehensive training and full support to ensure your success. Don't miss the chance to own this established and thriving teahouse in a high-traffic location!