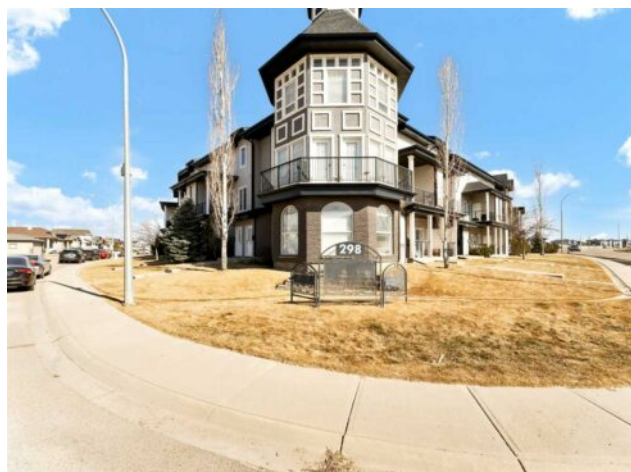


33, 298 Somerset Way SE  
Medicine Hat, Alberta

MLS # A2203850



**\$259,900**

Division:	Southland		
Type:	Residential/Five Plus		
Style:	2 Storey		
Size:	1,285 sq.ft.	Age:	2007 (18 yrs old)
Beds:	2	Baths:	1 full / 1 half
Garage:	Stall		
Lot Size:	-		
Lot Feat:	Other		

Heating:	Forced Air	Water:	-
Floors:	Carpet, Linoleum	Sewer:	-
Roof:	Asphalt Shingle	Condo Fee:	\$ 447
Basement:	None	LLD:	-
Exterior:	Brick, Mixed, Vinyl Siding	Zoning:	R-MD
Foundation:	Poured Concrete	Utilities:	-
Features:	Open Floorplan, Pantry		

Inclusions: N/A

Don't miss out on this incredible opportunity, perfect for both investors or first-time homebuyers! This pristine 1285 square foot condo is in impeccable condition and ideally located in the heart of the desirable Southland neighborhood, offering easy access to shopping, schools, parks, playgrounds, walking paths, and much more. The main level features a generous living room and dining area, complemented by a spacious kitchen with sleek granite countertops, ample cabinet space, and a convenient pantry. Step outside onto the charming deck, an ideal space for relaxing, with the added benefit of extra storage. A well-placed 2-piece bathroom completes the main level, offering ultimate convenience. Upstairs, you'll find a large primary bedroom, a second spacious bedroom, a full 4-piece bathroom, and a dedicated laundry room. Enjoy affordable, maintenance-free living at its best—schedule your showing today!