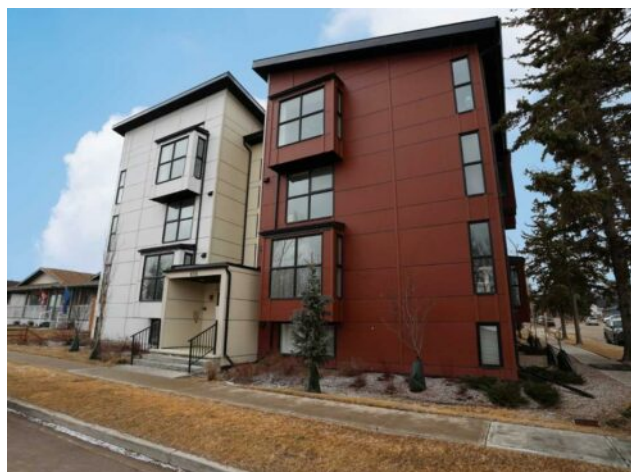


**41, 606 Lakeside Boulevard
Strathmore, Alberta****MLS # A2204765****\$314,900**

Division:	Downtown_Strathmore		
Type:	Residential/Low Rise (2-4 stories)		
Style:	Apartment-Single Level Unit		
Size:	957 sq.ft.	Age:	2021 (4 yrs old)
Beds:	2	Baths:	1
Garage:	Alley Access, Assigned, Outside, Stall		
Lot Size:	0.02 Acre		
Lot Feat:	-		

Heating:	Baseboard	Water:	-
Floors:	Carpet, Vinyl Plank	Sewer:	-
Roof:	Asphalt Shingle	Condo Fee:	\$ 496
Basement:	None	LLD:	-
Exterior:	Composite Siding, Vinyl Siding, Wood Frame	Zoning:	R3
Foundation:	Poured Concrete	Utilities:	-
Features:	Ceiling Fan(s), Double Vanity, High Ceilings, Kitchen Island, Open Floorplan, Quartz Counters, Storage, Vaulted Ceiling(s)		

Inclusions: N/A

Here in the wonderful town of Strathmore is this stylish condo in the LAKEVIEW APARTMENTS project located across from Kinsmen Park & only minutes to schools & the commercial centre. With just 12 homes (3 per floor) in this 4 storey boutique building, this fantastic top floor corner unit - which is lived in just 6 months out of the year, enjoys soaring vaulted ceilings & vinyl plank floors, 2 bedrooms & 1 full bath, quartz counters & panoramic views of Kinsmen Park. Simply amazing design featuring open concept dining room, airy living room with expansive windows & sleek kitchen with island, loads of cabinet space & white appliances including Whirlpool fridge. Both bedrooms are a terrific size & have great closet space. Between the bedrooms is the full bathroom with quartz-topped double vanities & shower/tub combo. Separate laundry room with Amana washer & dryer. Your assigned outdoor stall is located in the rear parking lot & is accessible directly from the elevator. Popular Kinsmen Park is right across the street with its winding trails, gazebo & pavilions, picnic benches & playground, sports fields, lake & amphitheatre. Prime location with quick easy access to the town centre, parks, recreational facilities & the TransCanada Highway.