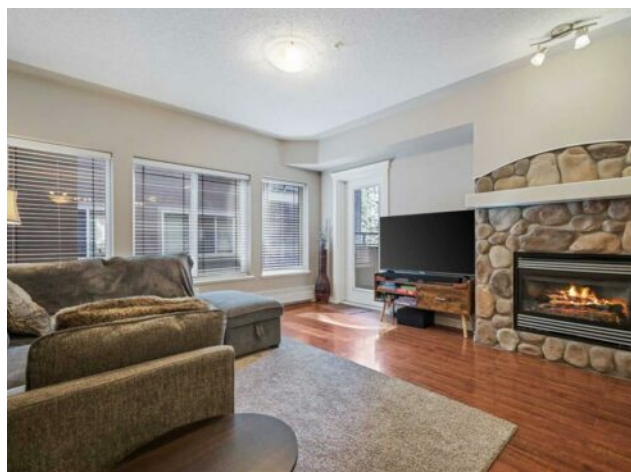


218, 30 Discovery Ridge Close SW  
Calgary, Alberta

MLS # A2207348



**\$329,900**

<b>Division:</b>	Discovery Ridge		
<b>Type:</b>	Residential/High Rise (5+ stories)		
<b>Style:</b>	Apartment-Single Level Unit		
<b>Size:</b>	792 sq.ft.	<b>Age:</b>	2007 (18 yrs old)
<b>Beds:</b>	1	<b>Baths:</b>	1
<b>Garage:</b>	Parkade, Stall, Underground		
<b>Lot Size:</b>	-		
<b>Lot Feat:</b>	-		

<b>Heating:</b>	Hot Water	<b>Water:</b>	-
<b>Floors:</b>	Carpet, Laminate, Linoleum	<b>Sewer:</b>	-
<b>Roof:</b>	-	<b>Condo Fee:</b>	\$ 376
<b>Basement:</b>	-	<b>LLD:</b>	-
<b>Exterior:</b>	Stucco	<b>Zoning:</b>	DC
<b>Foundation:</b>	-	<b>Utilities:</b>	-
<b>Features:</b>	Breakfast Bar, Elevator		

**Inclusions:** N/A

This is a unique 1 bedroom plus den, 792 sq ft condo is located in the 30 building, part of a concrete set of buildings surrounded by trees. The large living room has laminate floors running through the condo and into the office. The bedroom is carpet with a good sized walk in closet. Please note that all utilities, including lights, are included in the condo fee. The condo comes with one underground titled parking stall. A hiker's paradise, you are 3 minutes from the Elbow River pathway system. Discovery Ridge is a quiet, secluded area with easy access to shopping, schools and city transit. It is like living in Canmore yet 15 minutes to downtown. Mount Royal University and the Rockyview Hospital are less than 10 minutes away and you can be out of the city and on your way to Banff in minutes. Amenities include a gym and community room in Building 30. The recently completed Calgary Ring Road gives you easy access to all quadrants of the city. The Discovery Ridge community area is located right behind the Wedgewoods with a children's playground, tennis courts, soccer fields, skating/hockey rink, basketball court & all maintained by the Discovery Ridge Community Association.