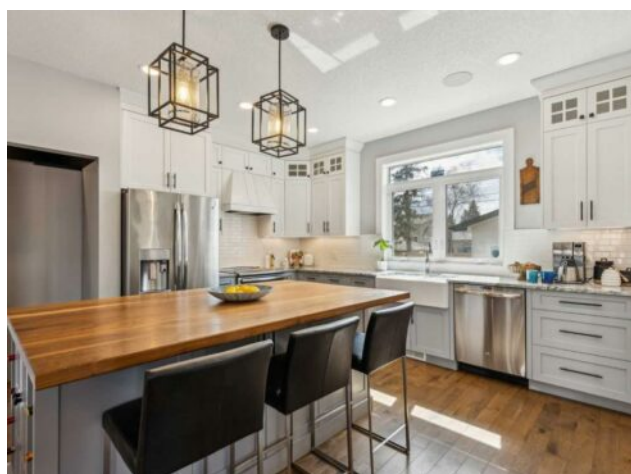


10 Glenmount Crescent SW Calgary, Alberta

MLS # A2210683


\$1,548,000

Division:	Glendale		
Type:	Residential/House		
Style:	Bungalow		
Size:	2,328 sq.ft.	Age:	2017 (8 yrs old)
Beds:	5	Baths:	4 full / 1 half
Garage:	Double Garage Detached, Oversized		
Lot Size:	0.17 Acre		
Lot Feat:	Back Lane, Back Yard, Cul-De-Sac, Front Yard, Lawn		

Heating:	In Floor, Forced Air, Natural Gas	Water:	-
Floors:	Carpet, Cork, Hardwood, Tile, Vinyl Plank	Sewer:	-
Roof:	Asphalt Shingle	Condo Fee:	-
Basement:	Finished, Full	LLD:	-
Exterior:	Composite Siding, Stone, Stucco, Wood Frame	Zoning:	R-CG
Foundation:	Poured Concrete	Utilities:	-

Features: Bookcases, Built-in Features, Ceiling Fan(s), Double Vanity, Kitchen Island, Open Floorplan, Pantry, Sauna, Soaking Tub, Steam Room, Vinyl Windows, Walk-In Closet(s), Wet Bar, Wired for Sound

Inclusions: steam shower unit and sauna unit in basement, sound system in home including built in speakers and all attached A/V components, hot tub,

OPEN HOUSE: Sat, June 28 from 2-4pm | **2017 CUSTOM BUILD IN GORGEOUS GLENDALE** | Imagine being able to call this 2017 custom-built bungalow your own, without having to go through the process of a new build, and at a cost that would be impossible to achieve today. Built to last and inspired by classic century home architecture, this unique property exudes a timeless elegance and quality craftsmanship rarely seen today. This thoughtfully designed layout offers over 4000 sf of living space, 5 bedrooms, 4.5 bathrooms and a sun-filled loft... a "magical" home that can suit families of all shapes and sizes. The warm and welcoming living room has a custom fireplace, lovely built-in display shelves and is open to the dining room and dream kitchen. Bespoke details include a central island with hand-crafted wood top, a deluxe walk-in pantry, induction cooktop and access to the ideal mudroom, back entry and 3 PC bath. With the enviable SE exposure and numerous windows throughout, life will be sun-filled all day long. There are 3 bedrooms on the main floor (2 sharing the Jack + Jill bathroom) and the primary suite with access to the deck, a large "Cali-closet" and luxurious ensuite with heated floors and towel rack, freestanding tub, glass shower and dual vanities. There is an exceptional main floor office with 4 work stations, tons of convenient storage and even a hidden (pull out) work table, ideal for larger art projects. The lower level is a fun and flexible space with a large wet bar, family room, games area and cozy gas fireplace. The 2 spacious bedrooms share large bathroom, complete with steam shower and built-in sauna. You will appreciate the built-in sound throughout and highly efficient mechanicals, including hot water on demand, a rough-in for future solar power, central A/C, in-floor heating throughout the lower level and

hook ups on the main floor for laundry. This sprawling 65ft lot located on a culdesac, opposite a green space, features a 22 x 24 garage, a large deck with a gas line and even a hot tub. Glendale is an eclectic and leafy westside area offering great access to LRT, many popular amenities and a vibrant community association to become a part of. A rare and wonderful opportunity for an urban family seeking comfortable luxury in a central location. Book your look today!