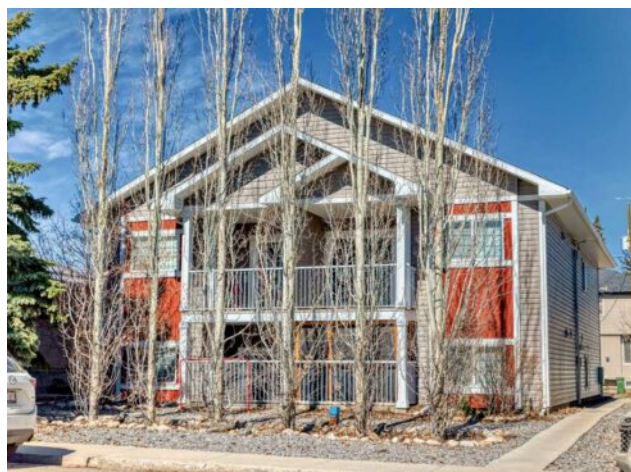


A, 134A 6 Avenue
Strathmore, Alberta

MLS # A2211475



\$280,000

Division:	Downtown_Strathmore		
Type:	Residential/Low Rise (2-4 stories)		
Style:	Apartment-Single Level Unit		
Size:	933 sq.ft.	Age:	2013 (12 yrs old)
Beds:	3	Baths:	1
Garage:	Assigned, Off Street, Stall		
Lot Size:	0.02 Acre		
Lot Feat:	-		

Heating:	Forced Air, Natural Gas	Water:	-
Floors:	Carpet, Linoleum	Sewer:	-
Roof:	Asphalt Shingle	Condo Fee:	\$ 300
Basement:	-	LLD:	-
Exterior:	Vinyl Siding, Wood Frame	Zoning:	R3
Foundation:	-	Utilities:	-
Features:	No Animal Home, No Smoking Home		

Inclusions: N/A

Move in NOW.3 Bedrooms. In Suite Laundry. Storage Shed. Assigned Parking Stall. Rear Alley.Off Street Parking. Main Floor Living. open Concept. Bright and Spacious. Private South Deck. Downtown Strathmore. Directly Across from Sacred Heart School. K-12. Steps to Kinsmen Park/Lake.Pet Friendly with Board Approval